

## **Admission Policy of St. Michael's House Grosvenor School**

**Leopardstown Road, Dublin 18**

**Roll number: 18671A**

**School Patron: St. Michael's House**

### **1. Introduction**

This Admission Policy complies with the requirements of the Education Act 1998, the Education (Admission to Schools) Act 2018 and the Equal Status Act 2000. In drafting this policy, the board of management of the school has consulted with school staff, the school patron and with parents of children attending the school.

The policy was approved by the school patron **09.06.2020**. It is published on the school's website and will be made available in hardcopy, on request, to any person who requests it.

The relevant dates and timelines for St. Michael's House Grosvenor School admission process are set out in the school's annual admission notice which is published annually on the school's website at least one week before the commencement of the admission process for the school year concerned.

This policy must be read in conjunction with the annual admission notice for the school year concerned.

The application form for admission is published on the school's website and will be made available in hardcopy on request to any person who requests it.

### **2. Characteristic spirit and general objectives of the school**

St. Michael's House School is a special school under the Patronage of St. Michael's House. The school supports the principles of:

- Inclusiveness of all students
- Equality of access and participation in the school of all students
- Parental/guardian choice in relation to enrolment
- Respect for diversity of values, beliefs, traditions, languages and ways of life in society.

The school is managed by a Board of Management (BOM) representative of the Patron, Parents/Guardians, School staff and the community.

### 3. Admission Statement

St. Michael's House School will not discriminate in its admission of a student to the school on any of the following:

- (a) the gender ground of the student or the applicant in respect of the student concerned,
- (b) the civil status ground of the student or the applicant in respect of the student concerned,
- (c) the family status ground of the student or the applicant in respect of the student concerned,
- (d) the sexual orientation ground of the student or the applicant in respect of the student concerned,
- (e) the religion ground of the student or the applicant in respect of the student concerned,
- (f) the disability ground of the student or the applicant in respect of the student concerned,
- (g) the ground of race of the student or the applicant in respect of the student concerned,
- (h) the Traveller community ground of the student or the applicant in respect of the student concerned, or
- (i) the ground that the student or the applicant in respect of the student concerned has special educational needs

As per section 61 (3) of the Education Act 1998, 'civil status ground', 'disability ground', 'discriminate', 'family status ground', 'gender ground', 'ground of race', 'religion ground', 'sexual orientation ground' and 'Traveller community ground' shall be construed in accordance with section 3 of the Equal Status Act 2000.

#### **Special schools**

St. Michael's House Grosvenor School is a school which, with the approval of the Minister for Education and Skills, provides an education exclusively for students with a category or categories of special educational needs specified by the Minister and does not discriminate in relation to the admission of a student who does not have the category of needs specified.

### 4. Categories of Special Educational Needs catered for in the school

St. Michael's House Grosvenor School, with the approval of the Minister for Education and Skills, provides an education exclusively for students with a moderate, severe or profound intellectual disability.

The school is coeducational catering for pupils aged 4 to 18 years. The Board of Management is bound by the Department of Education and Skills (D.E.S.) rules which provide that pupils may only be admitted from the age of 4 years and upwards, though compulsory attendance does not apply until the age of 6 years, and as per D.E.S. regulations, students leave school at the end of the school year in which they turn 18. To facilitate this age band, the range of classes extend from primary to post primary and are based on relevant and appropriate peer groupings.

### **Catchment Area**

The Catchment area for this school is highlighted in orange on the two-page map in Appendices A and B on pages 11 and 12 of this Admission Policy, or can be viewed by contacting the school on 01-2950534.

### **Governance**

The school operates within the regulations as outlined in the Rules for National Schools and the relevant circulars and directives issued by the Department of Education and Skills (DES). It is funded by grants from the DES. The school is under the administration of the Primary / Special Education Sections of the Department of Education & Skills. Teachers, Special Needs Assistants, Ancillary Staff and Bus Escorts are funded by the DES. Additional staffing allocations are determined by the National Council for Special Education.

The school currently has 1 Principal, 11 teachers and 22 SNAs. The school also employs bus escorts, job-sharing school secretaries, a caretaker, housekeeper and kitchen supervisor.

### **School Ethos**

St. Michael's House schools are multi-denominational, co-educational schools for children with moderate, severe and profound learning disabilities where the children are treated with dignity and respect and are enabled to participate, to the best of their ability, in an educational programme tailored to their individual needs to help support them to live a full and independent life within their families and their communities.

St. Michael's House Schools are multi-denominational and welcome children of all religions and none. There is no religious instruction provided. A values-based programme is integrated into the life and ethos of the school and seeks to promote respect, love, tolerance and caring for one another and our environment.

### **Curriculum**

Our school is a stimulating centre of education where each person is cherished as an individual whose ability, potential and needs are recognised and nurtured. The curricular programmes provided by the school are adapted to meet the particular educational needs of each child and a variety of methodologies and strategies are adopted to maximise the pupils' learning potential. The teachers, staff and multi-disciplinary team provide a challenging, sensitive and caring environment which fosters personal, social, and academic development in addition to independence and achievement. All pupils have an Individual Education Plan designed specifically for them.

St. Michael's House Special Schools deliver the state curriculum under the Guidelines for Students with General Learning Disabilities and where applicable, programmes that lead to Junior Cycle Level 1 and Level 2 Awards.

### **School Year**

The school operates a school calendar for primary schools which is effective from the week of 1<sup>st</sup> September to the week of 30<sup>th</sup> June with traditional openings and closing at Summer, Christmas, Easter and Mid-terms as laid down and directed in Circulars issued by the DES regarding Standardisation of the School Year.

### **School Multi-Disciplinary Team (MDT)**

In addition to fulfilling the formal role of School Patron, as required by the DES, St. Michael's House as part of Progressing Disability Services (PDS) provides clinical support to the school in the form of a school-age team which combines expertise from the fields of psychology, psychiatry,

social work, speech and language therapy, physiotherapy, occupational therapy, paediatrics and dietetics. Access to the MDT is on a referral basis. Referrals are then prioritised by the MDT and there can be a waiting list. New applicants may be discussed with the MDT team as part of the admission process.

Teaching and school staff collaborate with clinicians as appropriate to enhance the educational potential for students and where required to devise guidelines and programmes to maximise the child's educational and social functioning.

*Please note: successful applicants may not have automatic access to additional supports such as Special Needs Assistants (SNAs), bus escorts, clinical support or nursing staff. If a school place is offered, the National Council for Special Education (NCSE) is the agency that processes applications for SNAs and bus escorts. The NCSE requires that a pupil's need for access to such additional resources must be clearly outlined in the relevant professional reports. Decisions relating to clinical support will be made by the clinical team.*

## 5. Admission of Students

This school shall admit each student seeking admission except where –

- a) the school is oversubscribed (please see [section 6](#) below for further details)
- b) a parent of a student, when required by the principal in accordance with section 23(4) of the Education (Welfare) Act 2000, fails to confirm in writing that the code of behaviour of the school is acceptable to him or her and that he or she shall make all reasonable efforts to ensure compliance with such code by the student.

*Note: The Code of Behaviour includes the Positive Behaviour Support & Use of Restrictive Practice Policy and a copy will be provided to parents.*

St. Michael's House Grosvenor School provides an education exclusively for students with a moderate, severe or profound intellectual disability and may refuse admission to a student, where the student does not have the specified category of special educational needs provided for by this school.

An application will be valid when the documents listed below (see 1 -4) have been received by the school by the final date for receipt of applications as published in the Annual Admissions Notice.

1. Fully completed application form signed by one or both parents / guardians
2. A birth certificate for the student
3. Proof of address for the student (utility bill, social welfare letter or similar, dated within the last four months)
4. Psychological assessment (completed not more than 2 years earlier). It is essential that this report clearly states the cognitive level of functioning of the student.

## 6. Oversubscription

In the event that the school is oversubscribed or exceeds the number of vacancies in an age / needs appropriate class within the school, the school will, when deciding on applications for admission, apply the following selection criteria in the order listed below to those applications that are received within the timeline for receipt of applications as set out in the school's annual admission notice:

The student lives within the designated catchment area of the school

The assessed category of disability of the student. (See Page 2; Section 4)

The availability of an age &/ needs appropriate class to meet the needs of the student

In the event that there are two or more students tied for a place or places in any of the selection criteria categories above (the number of applicants exceeds the number of remaining places), the following arrangements will apply:

Priority will be given to applicants in order of age, based on the oldest applicant and the availability of an age and needs appropriate class.

## 7. What will not be considered or taken into account

In accordance with section 62(7)(e) of the Education Act, the school will not consider or take into account any of the following in deciding on applications for admission or when placing a student on a waiting list for admission to the school:

- (a) a student's prior attendance at a pre-school or pre-school service, including naíonraí,
- (b) the payment of fees or contributions (howsoever described) to the school;
- (c) the occupation, financial status, academic ability, skills or aptitude of a student's parents;
- (d) a requirement that a student, or his or her parents, attend an interview, open day or other meeting as a condition of admission;
- (e) a student's connection to the school by virtue of a member of his or her family attending or having previously attended the school;
- (f) the date and time on which an application for admission was received by the school.  
This is subject to the application being received at any time during the period specified for

receiving applications set out in the annual admission notice of the school for the school year concerned

The special educational needs of the student will be taken into account to ascertain that they have the assessed disability catered for in this school.

## **8. Decisions on applications**

All decisions on applications for admission to St. Michael's House Grosvenor School will be based on the following:

- Our school's admission policy
- The school's annual admission notice (where applicable)
- The information provided by the applicant in the school's official application form received during the period specified in our annual admission notice for receiving applications

(Please see [section 14](#) below in relation to applications received outside of the admissions period and [section 15](#) below in relation to applications for places in years other than the intake group.)

Selection criteria that are not included in our school admission policy will not be used to make a decision on an application for a place in our school.

## **9. Notifying applicants of decisions**

Applicants will be informed in writing as to the decision of the school, within the timeline outlined in the annual admissions notice.

If a student is not offered a place in St. Michael's House Grosvenor School, the reasons why they were not offered a place will be communicated in writing to the applicant, including, where applicable, details of the student's ranking against the selection criteria and details of the student's place on the waiting list for the school year concerned.

Applicants will be informed of the right to seek a review/right of appeal of the school's decision (see [section 18](#) below for further details).

## **10. Acceptance of an offer of a place by an applicant**

In accepting an offer of admission from St. Michael's House Grosvenor School, the applicant must indicate—

(i) whether or not you have accepted an offer of admission for another school or schools. If you have accepted such an offer, you must also provide details of the offer or offers concerned and

(ii) whether or not you have applied for and are awaiting confirmation of an offer of admission from another school or schools, and if so, you must provide details of the other school or schools concerned.

## **11. Circumstances in which offers may not be made or may be withdrawn**

An offer of admission may not be made or may be withdrawn by St. Michael's House Grosvenor School where—

- (i) it is established that information contained in the application is false or misleading.
- (ii) an applicant fails to confirm acceptance of an offer of admission on or before the date set out in the annual admission notice of the school.
- (iii) the parent of a student, when required by the principal in accordance with section 23(4) of the Education (Welfare) Act 2000, fails to confirm in writing that the code of behaviour of the school is acceptable to him or her and that he or she shall make all reasonable efforts to ensure compliance with such code by the student; or
- (iv) an applicant has failed to comply with the requirements of 'acceptance of an offer' as set out in [section 10](#) above.

## **12. Sharing of Data with other schools**

Applicants should be aware that section 66(6) of the Education (Admission to Schools) Act 2018 allows for the sharing of certain information between schools in order to facilitate the efficient admission of students.

Section 66(6) allows a school to provide a patron or another Board of Management with a list of the students in relation to whom—

- (i) an application for admission to the school has been received,
- (ii) an offer of admission to the school has been made, or
- (iii) an offer of admission to the school has been accepted.

The list may include any or all of the following:

- (i) the date on which an application for admission was received by the school;
- (ii) the date on which an offer of admission was made by the school;
- (iii) the date on which an offer of admission was accepted by an applicant;
- (iv) a student's personal details including his or her name, address, date of birth and personal public service number (within the meaning of section 262 of the Social Welfare Consolidation Act 2005 ).

## **13. Waiting list in the event of oversubscription**

In the event of there being more applications to the school year concerned than places available, a waiting list of students whose applications for admission to St. Michael's House Grosvenor School were unsuccessful due to the school being oversubscribed will be compiled and will remain valid for the school year in which admission is being sought. The waiting list will have three categories:

- a) Moderate Intellectual Disability
- b) Moderate Intellectual Disability with Autistic Spectrum Disorder
- c) Severe/Profound Intellectual Disability

Placement on the waiting list of St. Michael's House Grosvenor School is in the order of priority assigned to the students' applications after the school has applied the selection criteria in accordance with this admission policy.

Offers of any subsequent places that become available for and during the school year in relation to which admission is being sought will be made to those students on the waiting list, in accordance with the order of priority in relation to which the students have been placed on the list.

#### **14. Late Applications**

All applications for admission received after the closing date as outlined in the annual admission notice will be considered and decided upon in accordance with our school's admissions policy, the Education Admissions to School Act 2018 and any regulations made under that Act.



## 15. Procedures for admission of students to other years and during the school year

The procedures of the school in relation to the admission of students who are not already admitted to the school to classes or years other than the school's intake group are as follows:

Places will be offered to students where vacancies arise in age &/ needs appropriate classes throughout the school.

The procedures of the school in relation to the admission of students who are not already admitted to the school, after the commencement of the school year in which admission is sought, are as follows:

Where a vacancy exists or becomes available in an age &/ needs appropriate class, the next suitable applicant on the waiting list will be offered the place.

## 16. Declaration in relation to the non-charging of fees

The board of St. Michael's House Grosvenor School or any persons acting on its behalf will not charge fees for or seek payment or contributions (howsoever described) as a condition of-

- (a) an application for admission of a student to the school, or
- (b) the admission or continued enrolment of a student in the school.

## 17. Arrangements regarding students not attending religious instruction

There is no religious instruction programme in St. Michael's House Grosvenor School.

## 18. Reviews/appeals

### **Review of decisions by the board of Management**

The parent of the student, or in the case of a student who has reached the age of 18 years, the student, may request the board to review a decision to refuse admission. Such requests must be made in accordance with Section 29C of the Education Act 1998.

The timeline within which such a review must be requested and the other requirements applicable to such reviews are set out in the procedures determined by the Minister under section 29B of the Education Act 1998 which are published on the website of the Department of Education and Skills.

The board will conduct such reviews in accordance with the requirements of the procedures determined under Section 29B and with section 29C of the Education Act 1998.

**Note:** Where an applicant has been refused admission due to the school being oversubscribed, the applicant **must request a review** of that decision by the board of management prior to making an appeal under section 29 of the Education Act 1998.

Where an applicant has been refused admission due to a reason other than the school being oversubscribed, the applicant **may request a review** of that decision by the board of management prior to making an appeal under section 29 of the Education Act 1998.

### **Right of appeal**

Under Section 29 of the Education Act 1998, the parent of the student, or in the case of a student who has reached the age of 18 years, the student, may appeal a decision of this school to refuse admission.

An appeal may be made under Section 29 (1)(c)(i) of the Education Act 1998 where the refusal to admit was due to the school being oversubscribed.

An appeal may be made under Section 29 (1)(c)(ii) of the Education Act 1998 where the refusal to admit was due a reason other than the school being oversubscribed.

Where an applicant has been refused admission due to the school being oversubscribed, the applicant **must request a review** of that decision by the board of management **prior to making an appeal** under section 29 of the Education Act 1998. (see Review of decisions by the Board of Management)

Where an applicant has been refused admission due to a reason other than the school being oversubscribed, the applicant **may request a review** of that decision by the board of management prior to making an appeal under section 29 of the Education Act 1998. (see Review of decisions by the Board of Management)

Appeals under Section 29 of the Education Act 1998 will be considered and determined by an independent appeals committee appointed by the Minister for Education and Skills.

The timeline within which such an appeal must be made and the other requirements applicable to such appeals are set out in the procedures determined by the Minister under section 29B of the Education Act 1998 which are published on the website of the Department of Education and Skills.

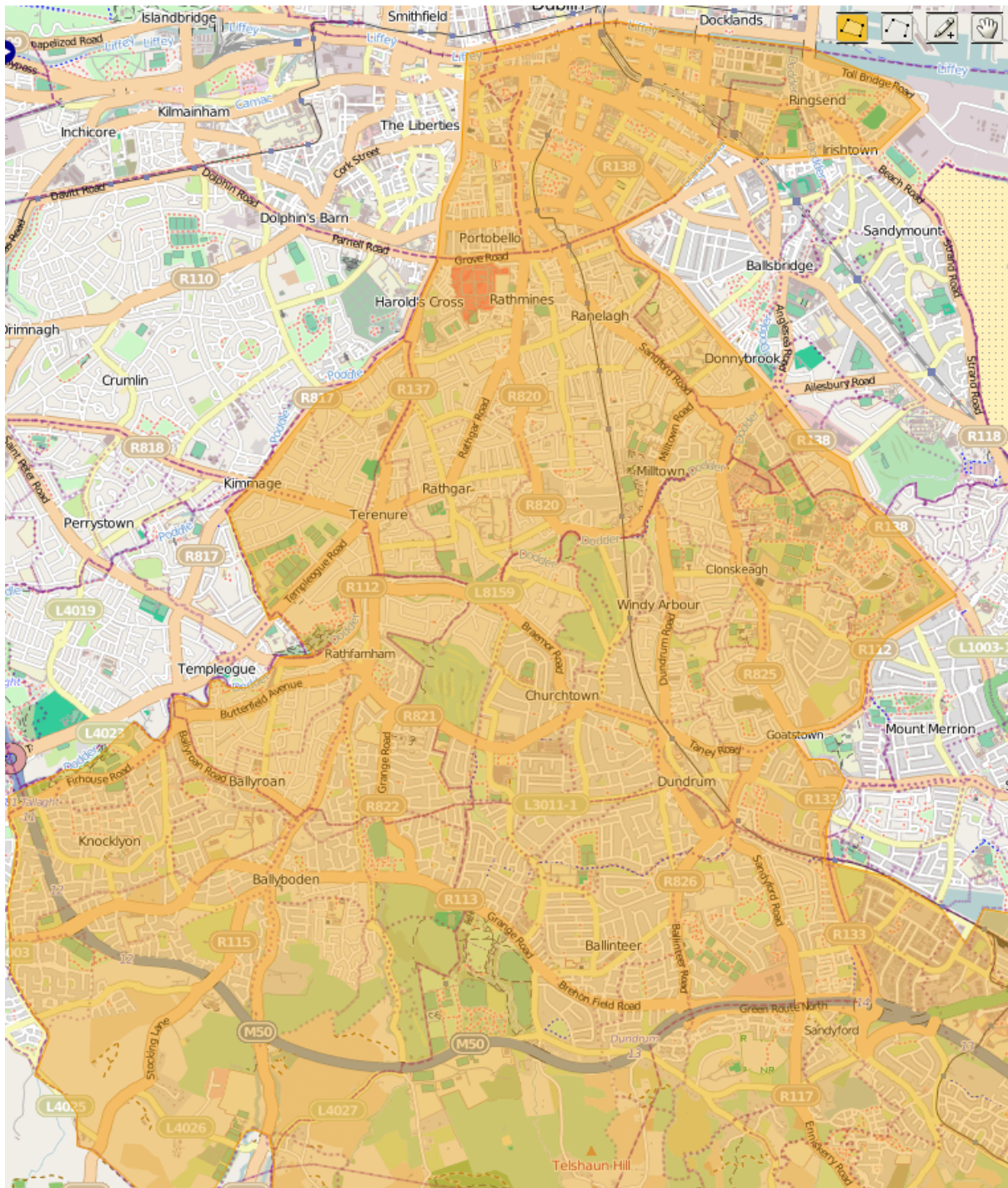
This policy was ratified by the Board of Management on 24.10.22

Signed: ***Paula O'Brien***

**Paula O'Brien, Chairperson of Board of Management**

Appendix A. Page 1 of two-page Map of St. Michael's House Grosvenor School Catchment Area

The Catchment area for this school is highlighted in orange on the maps on pages 11 and 12 of this Admission Policy, or can be viewed by contacting the school on 01-2950534.





Appendix B. Page 2 of two-page Map of St. Michael's House Grosvenor School Catchment Area

The Catchment area for this school is highlighted in orange on pages 11 and 12 of this Admission Policy, or can be viewed by contacting the school on 01-2950534.

